

SEE SHEET NO. 2.10

SEE SHEET NO. 2.16

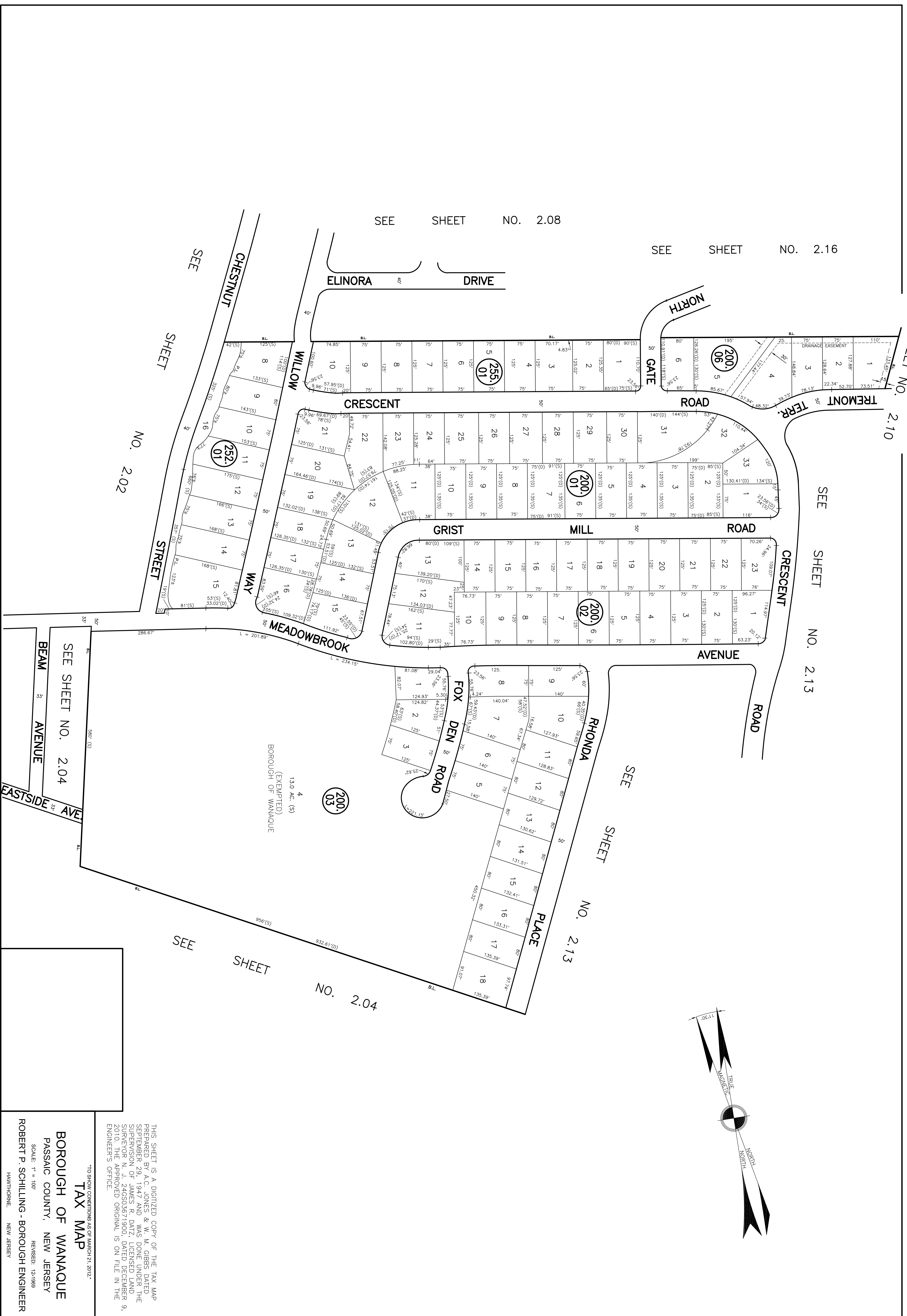
SEE SHEET NO. 2.08

SEE SHEET NO. 2.02

SEE SHEET NO. 2.13

SEE SHEET NO. 2.13

SEE SHEET NO. 2.04



THIS SHEET IS A DIGITIZED COPY OF THE TAX MAP PREPARED BY A.C. JONES & W. M. GIBBS DATED SEPTEMBER 29, 1947 AND WAS DONE UNDER THE SUPERVISION OF JAMES R. DATZ, LICENSED LAND SURVEYOR N. J. 246503671900, DATED DECEMBER 9, 2010. THE APPROVED ORIGINAL IS ON FILE IN THE ENGINEER'S OFFICE.

TO SHOW CONDITIONS AS OF MARCH 31, 2012
TAX MAP

BOROUGH OF WANAUQUE
 PASSAIC COUNTY, NEW JERSEY

ROBERT P. SCHILLING - BOROUGH ENGINEER
 HAWTHORNE, NEW JERSEY