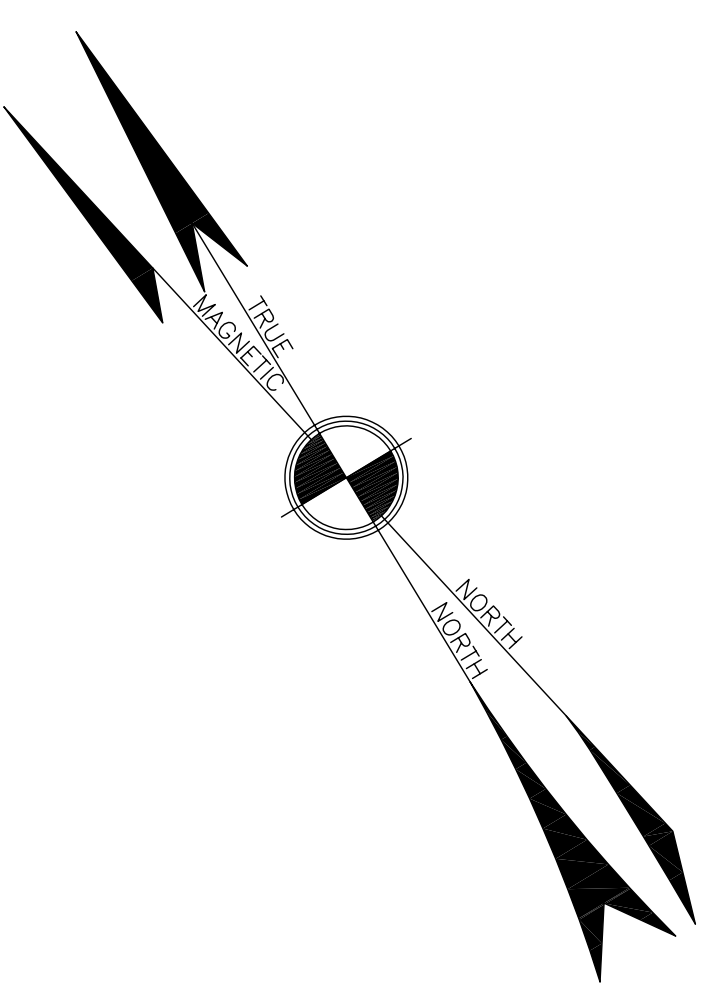


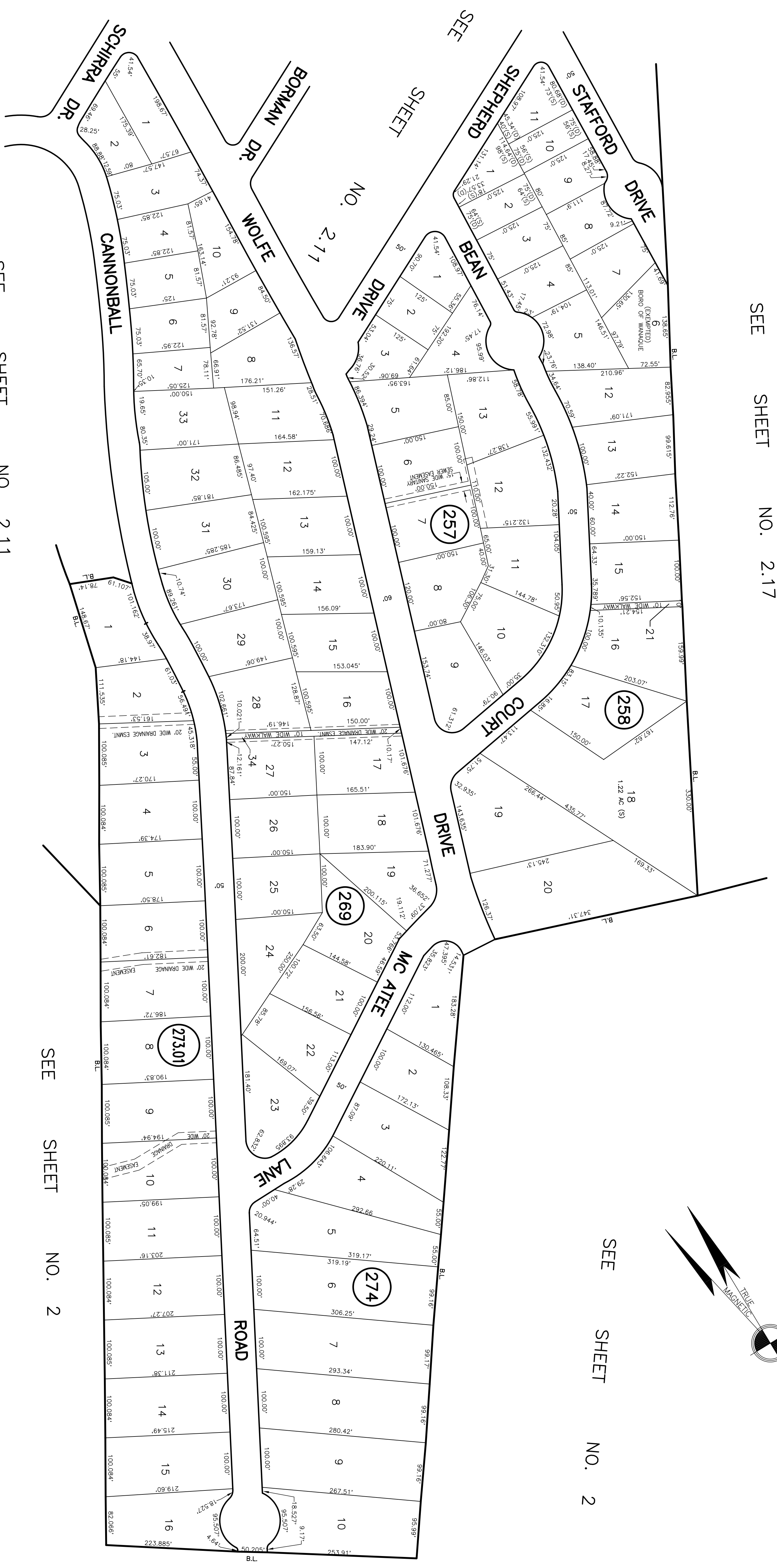
SEE SHEET NO. 2.17



SEE SHEET NO. 2

SEE SHEET NO. 2.11

SEE SHEET NO. 2



SEE SHEET NO. 2

THIS SHEET IS A DIGITIZED COPY OF THE TAX MAP PREPARED BY A.C. JONES & W. M. GIBBS DATED SEPTEMBER 29, 1947 AND WAS DONE UNDER THE SUPERVISION OF JAMES R. DATZ, LICENSED LAND SURVEYOR N. J. 246502671900, DATED DECEMBER 9, 2010. THE APPROVED ORIGINAL IS ON FILE IN THE ENGINEER'S OFFICE.

TAX MAP

BOROUGH OF WANAUQUE
PASSAIC COUNTY, NEW JERSEY
SCALE: 1" = 100'
REVISED: 11-1973
FRANCIS PANDULLO - BOROUGH ENGINEER
TOWNSHIP BORO. NEW JERSEY