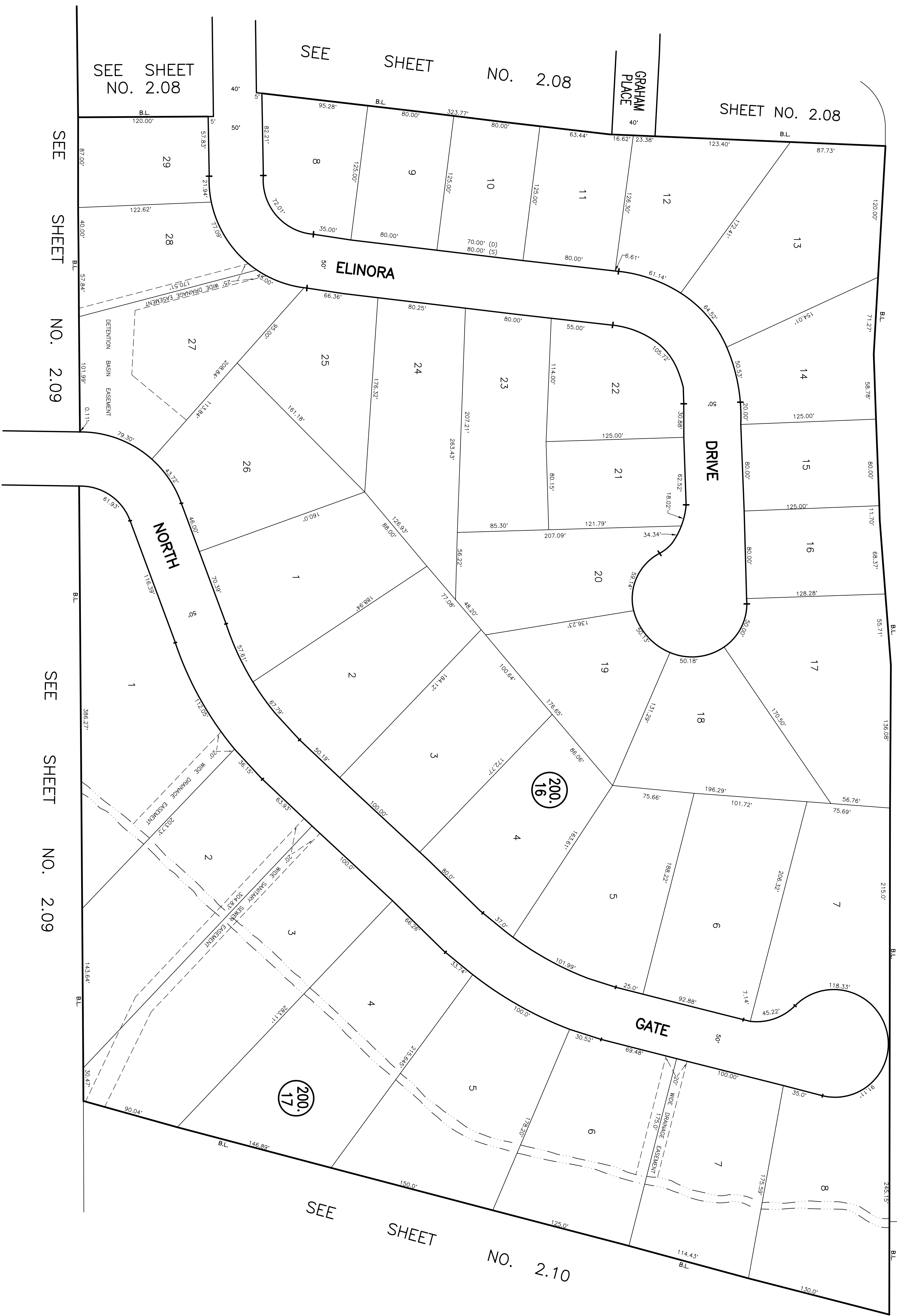
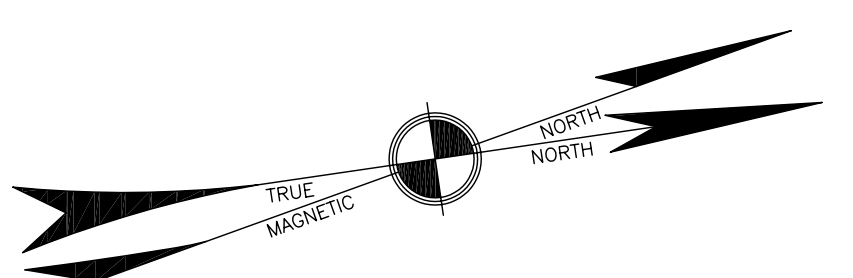


SEE SHEET NO. 2.14



SEE SHEET NO. 2.08

SHEET NO. 2.08

GRAHAM PLACE

SEE SHEET NO. 2.08

SEE SHEET NO. 2.09

SEE SHEET NO. 2.09

SEE SHEET NO. 2.10

THIS SHEET IS A DIGITIZED COPY OF THE TAX MAP PREPARED BY A.C. JONES & W. M. GIBBS DATED SEPTEMBER 29, 1947 AND WAS DONE UNDER THE SUPERVISION OF JAMES R. DATZ, LICENSED LAND SURVEYOR N. J. 24GS03671900, DATED DECEMBER 9, 2010. THE APPROVED ORIGINAL IS ON FILE IN THE ENGINEER'S OFFICE.

TO SHOW CONDITIONS AS OF MARCH 21, 2012

TAX MAP

BOROUGH OF WANAUKE
PASSAIC COUNTY, NEW JERSEY
SCALE: 1" = 50'
REVISION: 3-1985
T. RONALD GSELL
LICENSED LAND SURVEYOR - N.J. LICENSE NO. 12812
200 HIGH STREET, MOUNT HOLLY, NEW JERSEY