

BIRD FLU AWARENESS

PASSAIC COUNTY DEPARTMENT OF HEALTH SERVICES

New Jersey Avian Flu Information

In New Jersey, there have been confirmed cases of H5N1 (bird flu) in wild birds. As of now, no cases have been reported in domestic poultry, livestock or Humans.

What to Know: Avian influenza, or “bird flu,” is a respiratory disease of birds caused by influenza A viruses. H5 bird flu is widely spread in wild birds globally and is causing outbreaks in poultry and U.S. dairy cows. Recent cases have been reported in U.S. dairy and poultry workers. While the public health risk remains low, the CDC is closely monitoring the situation and working with states to track people with animal exposures. The CDC is using its flu surveillance systems to keep watch for H5 bird flu activity in people.

Symptoms Observed in Dairy Workers

- Eye redness (predominant symptom)
- Respiratory symptoms
- Fever
- Cough
- Sore throat
- Runny/stuffy nose
- Muscle aches
- Headaches
- Fatigue



Risk to Humans

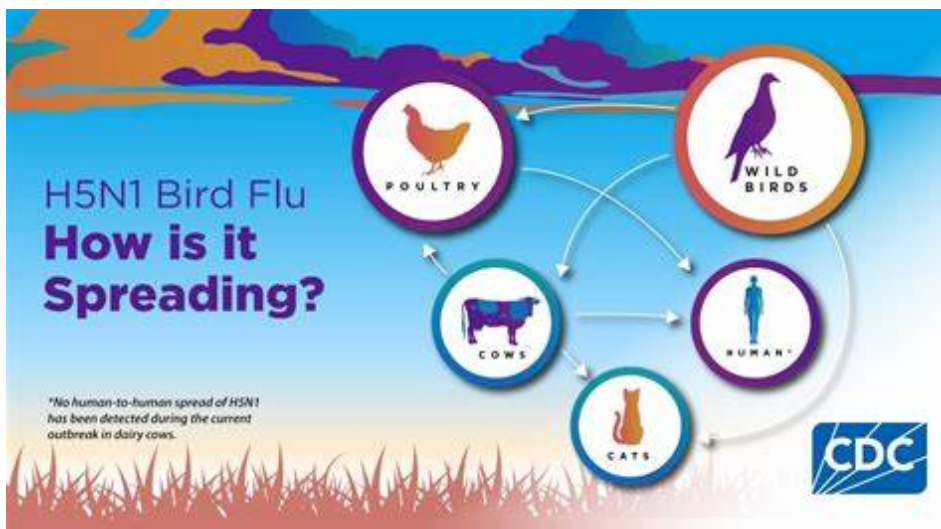
The risk to humans is low, but people who have direct contact with infected animals should take precautions.

Milk Supply Safety

The commercial milk supply is safe. Avoid raw milk and raw milk products.

Reference: CDC, NJDOH, NJ DEP

**What to do if you see a group of sick or dead birds?
Contact the NJ DEP Fish and Wildlife hotline at
1-877-WARNDEP (1-877-927-6337).**



**FOR MORE INFORMATION
GO TO:**



**CDC
Website**



**NJ DEP
Website**